

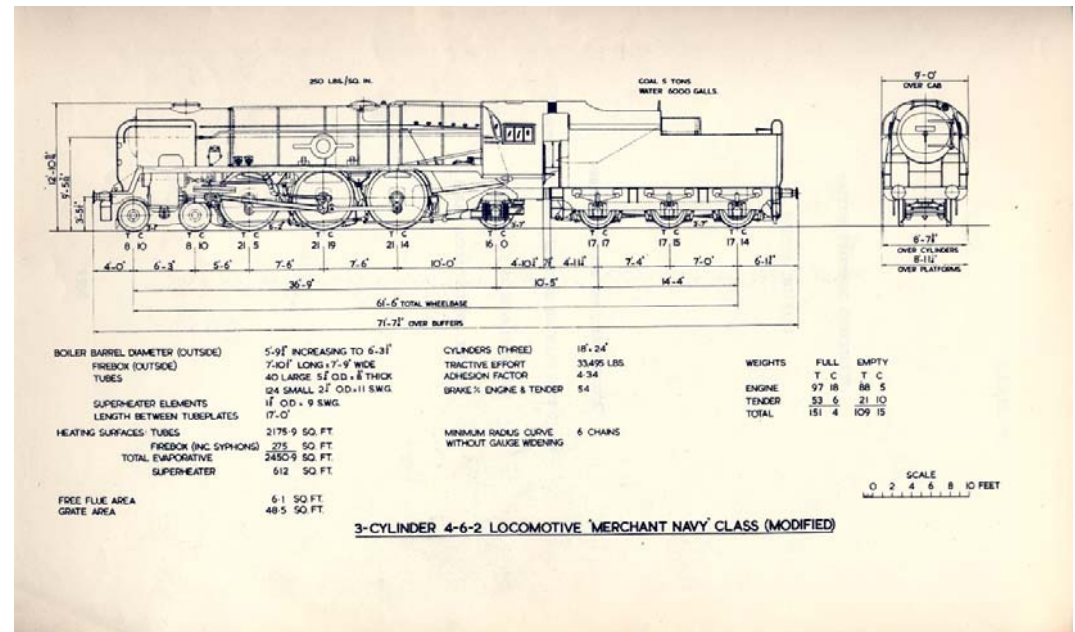
Rebuilt Merchant Navy class steam locomotive



From [Lesto Route Works](#) & [UK Branch Lines](#)

History

The Merchant Navy locomotive as designed in 1938 by the Southern Railways CME Oliver Bulleid, the loco he produced had novel features for British steam locomotives at the time. These features included an enclosed chain driven valve gear in a oil bath, welded steel firebox with thermic syphons, Air-smoothed casing and Bulleid-Firth-Brown wheels. While these innovations were unique some other caused problems, so in 1956 British Railways decided to rebuild the locomotive to a more conventional design. The design included removing the Chain driven valve gear and replacing it with 3 sets of independent Walschaerts valve gear. Elimination of the air smoothed casing, replaced with conventional boiler cladding along the lines of the BR standards.



Model Features

This model is representative of the Rebuilt Merchant Navy after first rebuilding prior to the few modifications they received. The loco includes:

- Custom sound effects created by Tony Weber
- Random numbers and nameplate switching by Eldavo
- Couplestar support for animated couplings
- User definable head codes by ZXR400
- User changeable Name boards
- Cylinder drain cock effects
- Whistle effects
- Safety valve effects
- Twinkles smoke

This model also includes 3 types of tender fitted with the TIA water treatment system. The original non cut down tender was used on 35020 Bibby Line for the trials of the Rebuilt design.

Currently research is underway for a custom cab and other small model enhancements including a separate aliased weathered reskin. Other additions will be the 5,000, 5,100 and 5,250 gallon tenders.

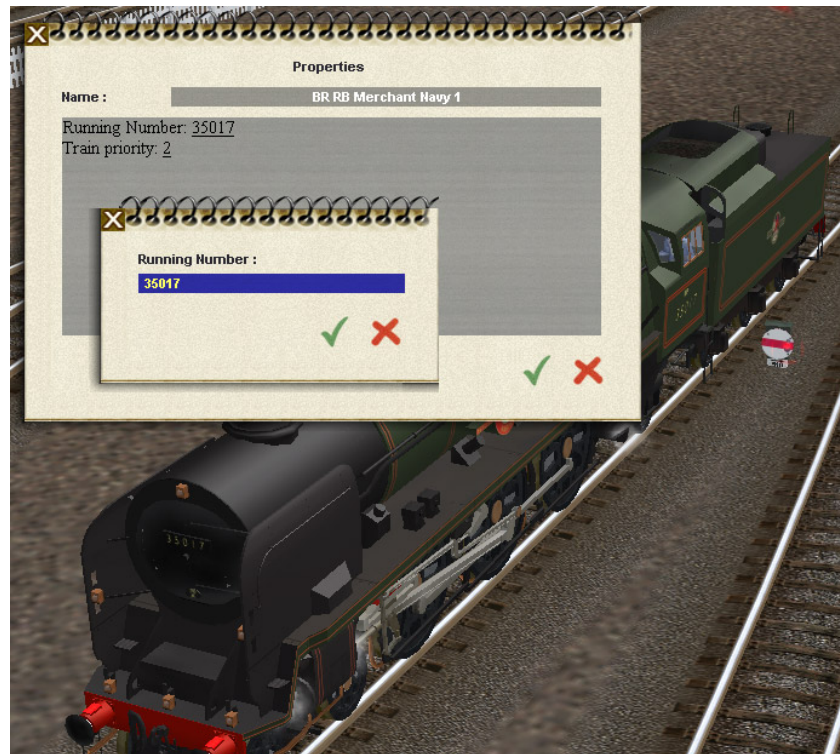
Updates

The loco has had a major update with many new parts for the locomotive. These updates include

- New boiler & firebox
- New cab
- New texture set
- Specular lighting
- New wheel set
- Polygon count reductions on cylinders
- New animation for valve gear
- New twinkles smoke & steam effects
- Animated coupling with custom meshes
- User selectable Head codes & Name boards

Changing the number and nameplate

To change the number and nameplate of the locomotive you need to be in surveyor. Once the locomotive is placed on the track, click the question mark button from the loco/rolling stock panel and then click on the loco. This will open up a new window. In this new window you will have the loco number and train priority. Click on the number and this will open up a new smaller window where you can type in a new number. The Rebuilt Merchant Navy numbers range from 35001 to 35030.



Head codes & name boards

The user selectable head codes and name boards are a new feature to the updated Rebuilt Merchant Navy steam locomotive. This guide will show you how to set the correct head codes for a passenger train with a name board. To access the properties dialog for the locomotive you need to be in 'Driver'. Once you are in Driver right click on the locomotive and select "View Details".



The properties dialog for the locomotive should appear after clicking View Details. From here you can add and remove head code discs by clicking on the appropriate disc. To change and toggle through the name boards click on the picture of the name boards. It will cycle through each name board with each click.



Once you have chosen your selection of head codes and nameplates your locomotive should look something like this.



The locomotive and tenders can be found under Region "British Railways", Company "SR Steam". The locomotive and tenders is names as follows:

RB Merchant Navy

RB Merchant Navy 6000 Gal Early Logo Tender

RB Merchant Navy 6000 Gal Late Logo Tender

RB Merchant Navy 6000 Gal Original Tender



Kuids

Make sure you have all the kuidids listed below installed if your having some problems with the loco. All the assets listed below are required for the locomotive to work.

<kuid:101839:50004>	RB Merchant Navy Dummy Bogie
<kuid:101839:50001>	RB Merchant Navy Front Bogie
<kuid:101839:50000>	RB Merchant Navy Driving Wheels
<kuid:101839:50002>	RB Merchant Navy Rear Bogie
<kuid2:60850:88000:4>	Max Permitted Speed Icon (by Bloodnok)
<kuid:126323:53028>	RB Merchant Navy Engine Sound (by trw1089)
<kuid:126323:54028>	RB Merchant Navy Whistle Sound (by trw1089)
<kuid:101839:40001>	Steam/Smoke Texture
<kuid:101839:40002>	Steam Texture
<kuid:101839:40003>	Smoke Texture
<kuid:60850:89000>	Max Permitted Speed (by Bloodnok)
<kuid:-3:10184>	Flying Scotsman Interior
<kuid:101839:51000>	RB Merchant Navy Engine Spec
<kuid:44090:110>	Driver (by paulhobbs)
<kuid:44090:111>	Fireman (by paulhobbs)

<kuid:101839:15>	Tail Lamp
<kuid:101839:30000>	Light corona
<kuid2:101839:5001:1>	RB Merchant Navy Locomotive HTML
<kuid2:101839:5002:1>	RB Merchant Navy Tender HTML
<kuid2:101839:40000:1>	RB Merchant Navy Texture Library
<kuid2:75134:99001:11>	Chameleon Library (by Eldavo)
<kuid2:75134:99003:7>	Number It Library (by Eldavo)
<kuid2:75134:99002:10>	Couplestar Library (by Eldavo)
<kuid2:101839:10:1>	SR Screwlink Coupled
<kuid2:101839:11:1>	SR Screwlink Uncoupled
<kuid2:101839:13:1>	RB Merchant Navy Vacuum pipe Uncoupled
<kuid2:101839:14:1>	RB Merchant Navy Vacuum pipe Coupled Low
<kuid2:101839:12:1>	RB Merchant Navy Vacuum pipe Coupled High